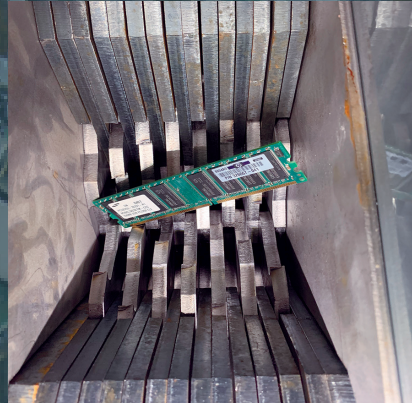
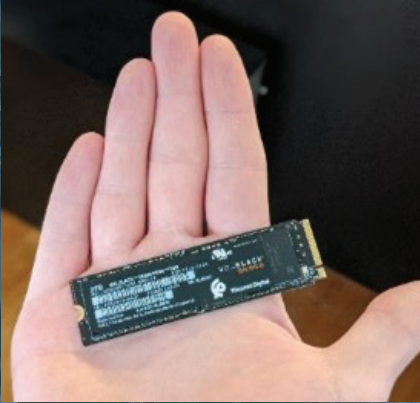


# SOLUTION SPOTLIGHT



## PROBLEM:

### Data Bearing Devices Keep Getting Smaller

M.2 SSDs and other small data bearing devices can pass through some SSD shredders with minimal to no damage if fed improperly.

Generally, M.2 SSDs are 3 mm thick, 22 mm wide and 60 mm or 80 mm long; although card lengths can vary.

## SOLUTION:

### Ameri-Shred Precision Cutterheads

Ameri-Shred developed precision clearance cutterheads that ensure the destruction of M.2 SSDs and other small media. These cutterheads are available on all new SSD shredders as an upgrade. A retrofit upgrade package is also available on any model purchased after 2018.



Scan here to see the precision clearance cutterheads in action!